



BEAR[®]

*Advanced Wheel
Alignment Systems*

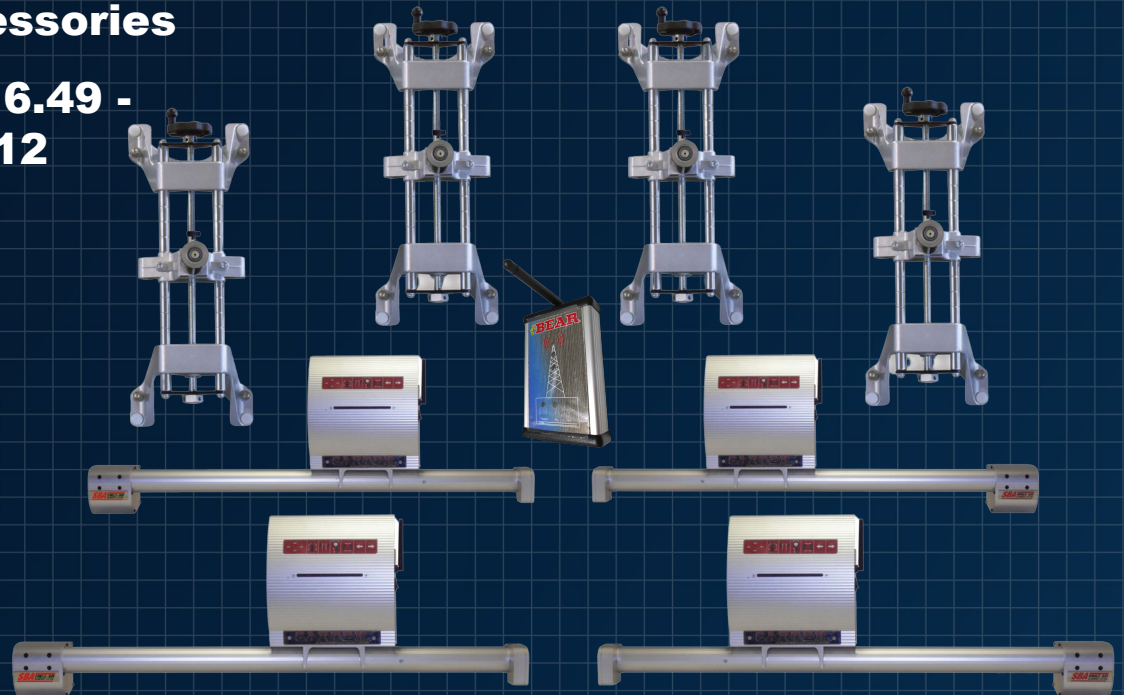


SBA
WHEEL ALIGNMENT

**MODEL
60-8210L**

MODEL 60-8210L

- **8-Sensor Wheel Units**
- **Standard Clamps**
- **Econo-computer**
- **MINI-DELOREAN Cabinet**
- **Alignment Accessories**
- **Software SBA 16.49 - subscription for 12 months**



Alignment accessories:

Stiring
Wheel Hold

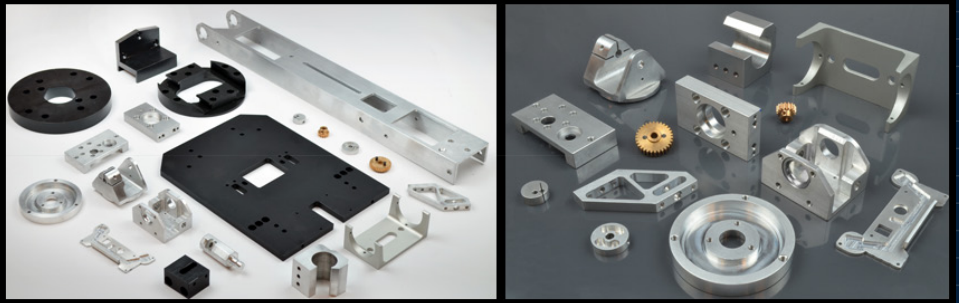


Brake Pedal
Depressor



• **2yr Parts Warranty**

BEAR
ALIGNMENT
MACHINES ARE
MANUFACTURED
100% IN THE USA



★ **2 YEAR** ★
WHEEL ALIGNMENT
WARRANTY

Unique Industry-Wide 2 Year Parts warranty
Exceptions: Computer (motherboard, RAM, hard drive, floppy drive, power supply) and Computer Peripherals (mouse, keyboard, printer, monitor, camera) which are covered under their respective manufacturer's warranty. Consumable parts such as Power Cables, Wheel Unit Cables and batteries, which are covered under warranty for 90 days.

Distributed by:

THE CARTEK GROUP
6950 EAST N AVENUE
KALAMAZOO, MI USA 49048
ph: 866-550-1134 / customerservice@cartek.com
www.bear-cartek.com